

HOLTZ SCRATCHER KIT



P/N 2882028

APPLICATION

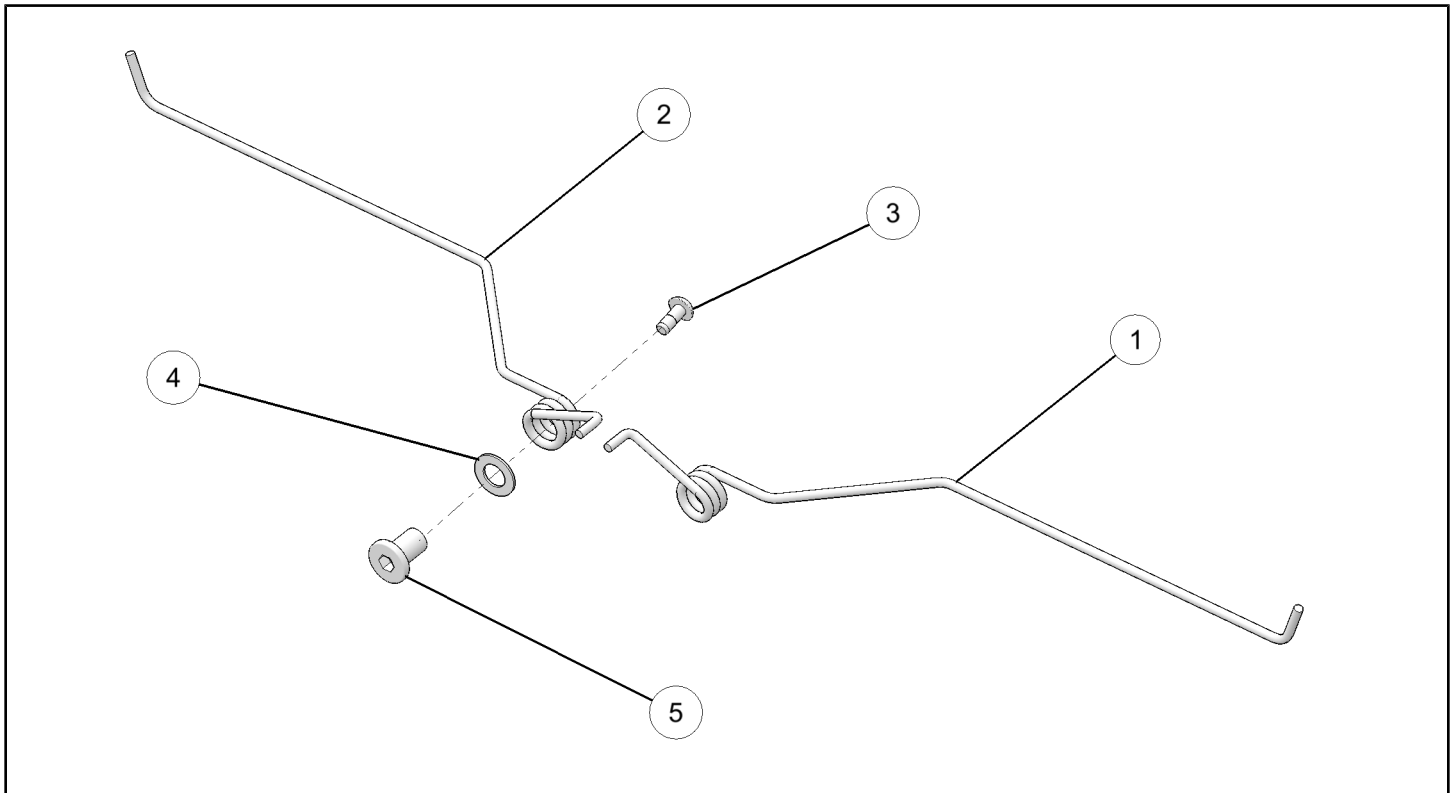
AXYS RMK

BEFORE YOU BEGIN

Read these instructions and check to be sure all parts and tools are accounted for. Please retain these installation instructions for future reference and parts ordering information.

KIT CONTENTS

This Kit includes:



REF	QTY	PART DESCRIPTION	PART NUMBER
1	1	Scratcher-Holtz, LH	7044276
2	1	Scratcher-Holtz, RH	7044277
3	2	Screw, M8 X 1.25	7519997
4	2	Washer, 0.632 X 1.125	7555877
5	2	Bushing-Holtz	7556891
	1	Instructions	9927139

TOOLS REQUIRED

- 3/8" Drive Ratchet
- T40 Torx® Socket
- 10 mm Allen Wrench

IMPORTANT

Your HOLTZ SCRATCHER KIT is exclusively designed for your vehicle. Please read the installation instructions thoroughly before beginning. Installation is easier if the vehicle is clean and free of debris. For your safety, and to ensure a satisfactory installation, perform all installation steps correctly in the sequence shown.

ASSEMBLY TIME

Approximately 15 minutes

INSTALLATION INSTRUCTIONS

1. Remove old scratcher.
2. Install new RH scratcher ② using supplied screw ③, washer ④, and bushing ⑤. Repeat the same process for installing new LH scratcher ①. Torque to specification.

TORQUE

14 ft. lbs. (19 Nm)

